

Collas Crill share private client expertise in ICLG chapters

March 2019

The Collas Crill Guernsey and Jersey based international private client and trust teams have collaborated with several major international law firms to produce the 2019 International Comparative Legal Guide (ICLG) to Private Clients.

In its 8th year, this multi-jurisdictional legal reference provides a 'practical cross-border insight into private client work'. Group partners Angela Calnan (Guernsey) and Kellyann Ozouf (Jersey), who both head the fiduciary practice within their respective jurisdictions, teamed up with other specialists in the firm to write these detailed chapters regarding private client law in the Channel Islands (CI).

Targeted at general counsel, the ICLG chapters provide a comparative and business-focused legal analysis covering common issues in private client laws and regulations across 35 jurisdictions. Topics include; pre-entry tax planning, connection factors, taxation issues on inward investment, succession planning, trusts and foundations, immigration issues and tax treaties.

Other firms who have contributed include Macfarlanes, Withers, Maples & Calder, Bryan Cave Leighton Paisner and BDB Pitmans.

Angela said: "We pride ourselves on being a strong technical team who produce quality work, and 2018 was another award winning year for our practice. It was an honour to be invited to write these chapters on behalf of ICLG, and is welcomed acknowledgment of our expertise in this area."

"Our Jersey practice has continued to expand in terms of personnel and the diversity of work. 2018 saw us working on significant international trust and foundation structuring for clients as well collaborating with our dispute resolution colleagues on a variety of contentious trust matters and with our corporate department on various corporate, finance and banking matters. Local pension and charities work also played a prominent role," added Kellyann.

Special thanks to Nick Marshall, senior associate, for his considerable contribution to the chapters.

We invite you to review the full guidance texts at the links provided:

[Private Client Laws and Regulations – Guernsey](#)

[Private Client Laws and Regulations – Jersey](#)

WE ARE OFFSHORE LAW

BVI | Cayman | Guernsey | Jersey | London

For more information please contact:



Angela Calnan

Partner // Guernsey

t: +44 (0) 1481 734233 // e: angela.calnan@collascrill.com



Joanne Seal

Group Partner*† // Guernsey

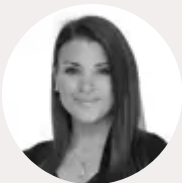
t: +44 (0) 1481 734261 // e: joanne.seal@collascrill.com



Dionne Gilbert

Partner // Jersey

t: +44 (0) 1534 601682 // e: dionne.gilbert@collascrill.com



Cerisse Fisher

Group Partner *† // Guernsey

t: +44 (0) 1481 734882 // e: cerisse.fisher@collascrill.com

WE ARE OFFSHORE LAW

BVI | Cayman | Guernsey | Jersey | London

This note is a summary of the subject and is provided for information only. It does not purport to give specific legal advice, and before acting, further advice should always be sought. Whilst every care has been taken in producing this note neither the author nor Collas Crill shall be liable for any errors, misprint or misinterpretation of any of the matters set out in it. All copyright in this material belongs to Collas Crill.